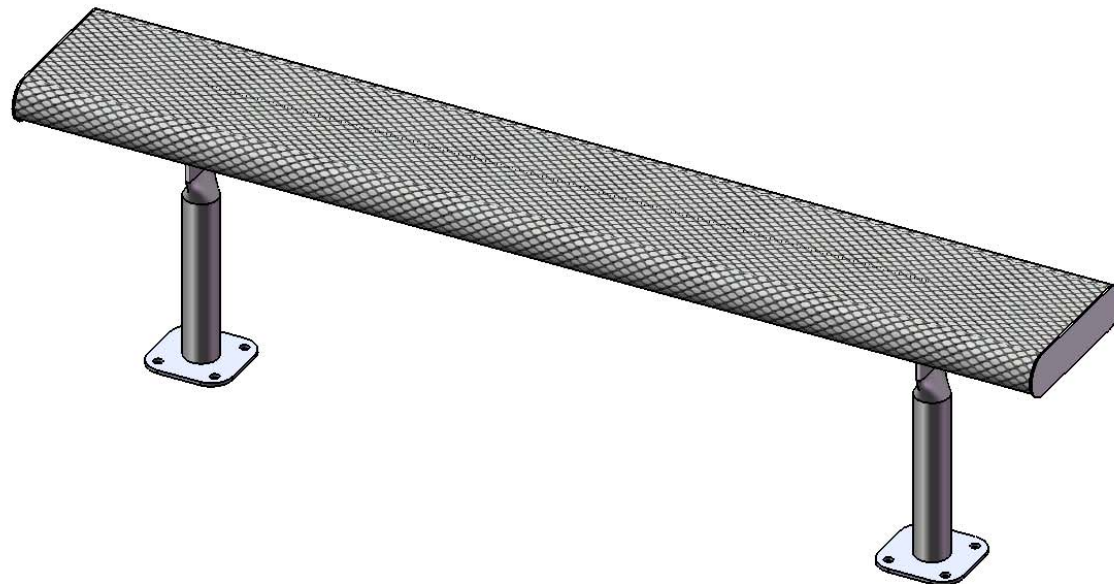


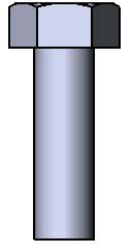
# *Site Amenities*

BY SUPERIOR RECREATIONAL PRODUCTS

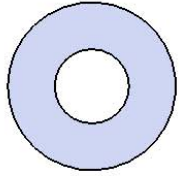


Model # B6ROLLSM

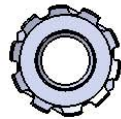
# HARDWARE



5/16" x 1"  
Machine Bolt



5/16" Washer



5/16" Kep Nut

# PRODUCT SPECIFICATIONS

## **B6ROLLSM SURFACE MOUNT BENCH WITHOUT BACK**

Seats & Back: 7 gauge laser cut end plates for a smooth finish.  $\frac{3}{4}$ " x #9 steel expanded metal, rolled to a 3" diameter on both sides. 7 gauge x 1-1/2" flat bar center support and mounting bracket understructure. Electrically MIG welded.

Coating: Oven fused functionalized polyethylene copolymer-based thermoplastic. Fluidized bed coating application with superior mechanical performance, impact resistance and UV-stability.

Frame: 2-3/8" O.D. x 12 gauge pre-galvanized structural steel tubing. Seat mounting points 7 gauge x 1-1/2" die stamped steel flat bar. A 6" x 6" steel plate makes up the surface mount footing. The surface mount plate has four holes for stable mounting, and clipped corners for a more finished look. Electrically MIG welded.

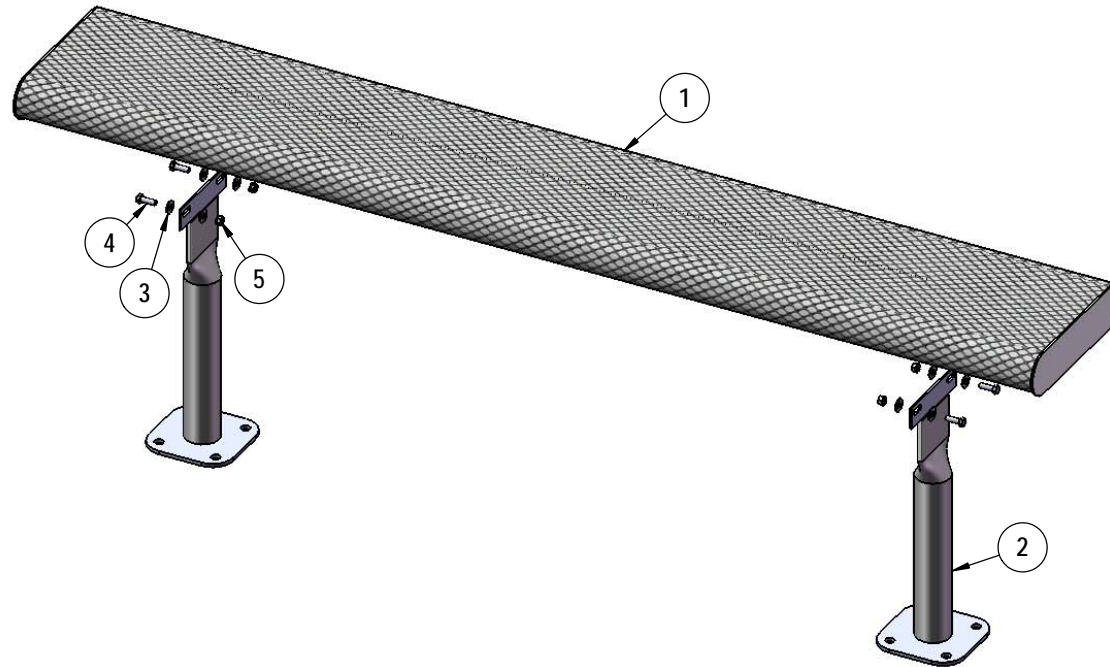
Frame Coating: Electrostatic powder coated application oven cured.

Hardware: All stainless steel hardware fasteners.

Dimensions: 6' bench surface mount without back. Seats are 12" wide x 72" long. Seat height is 20". Total depth of bench is 12".

# COMPONENTS

Attach the Vinyl Rolled Seat to the Legs as shown using specified hardware.



| ITEM NO. | PartNo     | DESCRIPTION                  | QTY |
|----------|------------|------------------------------|-----|
| 1        | T-VR72-S   | 6' Vinyl Rolled Seat         | 1   |
| 2        | P-V942SM   | 942SM VINYL LEG              | 2   |
| 3        | 33-02-0007 | 5/16" SS Washer              | 8   |
| 4        | 33-05-0029 | 5/16" x 1" Machine Bolt (SS) | 4   |
| 5        | 33-03-0012 | 5/16" Kep Nut (SS)           | 4   |

Recommended Surface Mount Hardware:  
3/8" x 3-1/2" Concrete Expansion Anchor Bolts  
(Not Included)

**SUPERIOR**  
RECREATIONAL PRODUCTS  
A PLAYCORE Company

## OVERALL DIMENSIONS

