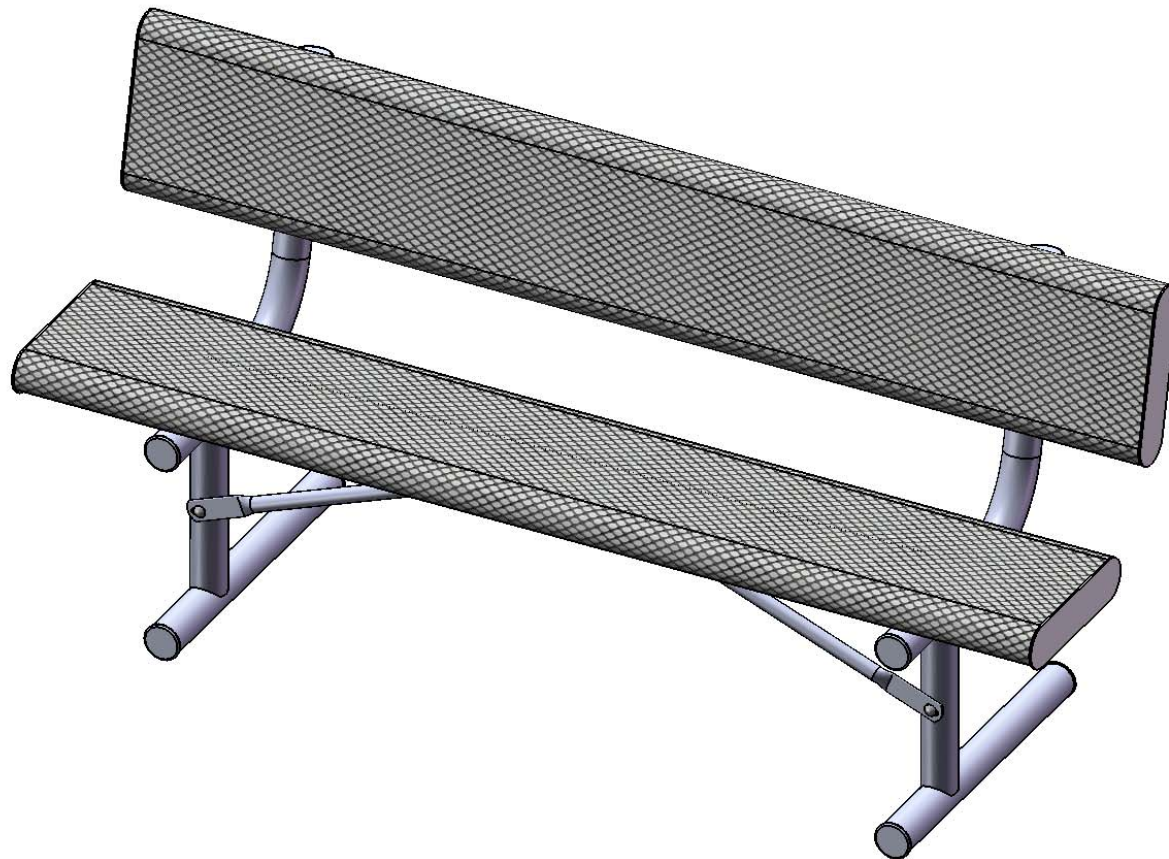


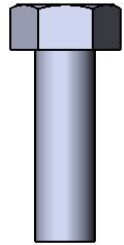
# *Site Amenities*

BY SUPERIOR RECREATIONAL PRODUCTS

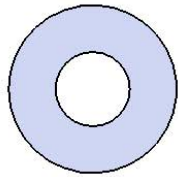


Model # B6WBROLLP

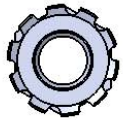
## HARDWARE



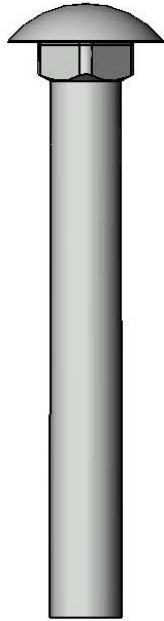
5/16" x 1"  
Machine Bolt



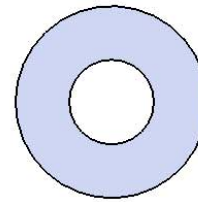
5/16" Washer



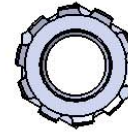
5/16" Kep Nut



3/8" x 3"  
Carriage Bolt



3/8" Washer



3/8" Kep Nut

## PRODUCT SPECIFICATIONS

### **B6WBROLLP PORTABLE BENCH WITH BACK**

**Seats & Back:** 7 gauge laser cut end plates for a smooth finish.  $\frac{3}{4}$ " x #9 steel expanded metal, rolled to a 3" diameter on both sides. 7 gauge x 1-1/2" flat bar center support and mounting bracket understructure. Electrically MIG welded.

**Coating:** Oven fused functionalized polyethylene copolymer-based thermoplastic. Fluidized bed coating application with superior mechanical performance, impact resistance and UV-stability.

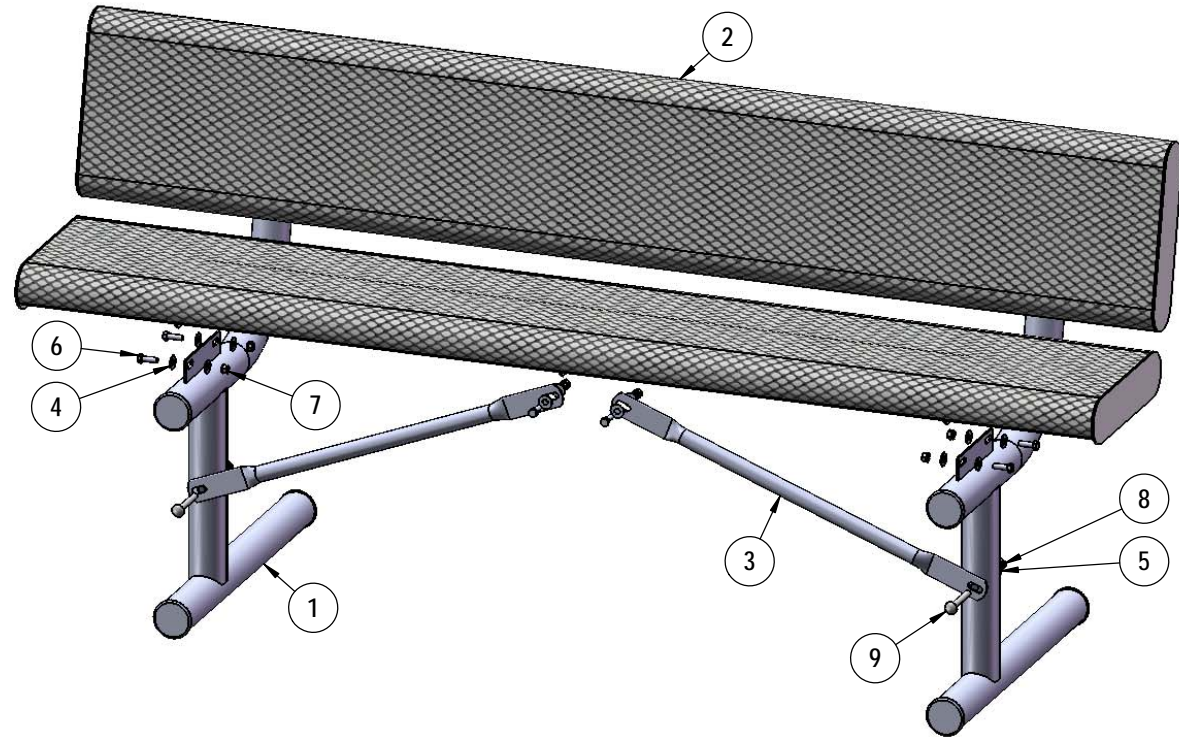
**Frame:** 2-3/8" O.D. x 12 gauge pre-galvanized structural steel tubing. Seat/back support is bent over a mandrel through the bend radius producing a wrinkle free bend. Tube ends are pre-galvanized steel capped. Seat mounting points are 7 gauge x 1-1/2" die stamped steel flat bar. Cross braces are 1" O.D. x 16 gauge pre-galvanized structural steel tubing. All electrically MIG welded.

**Frame Coating:** Electrostatic powder coated application oven cured.

**Hardware:** All stainless steel hardware fasteners.

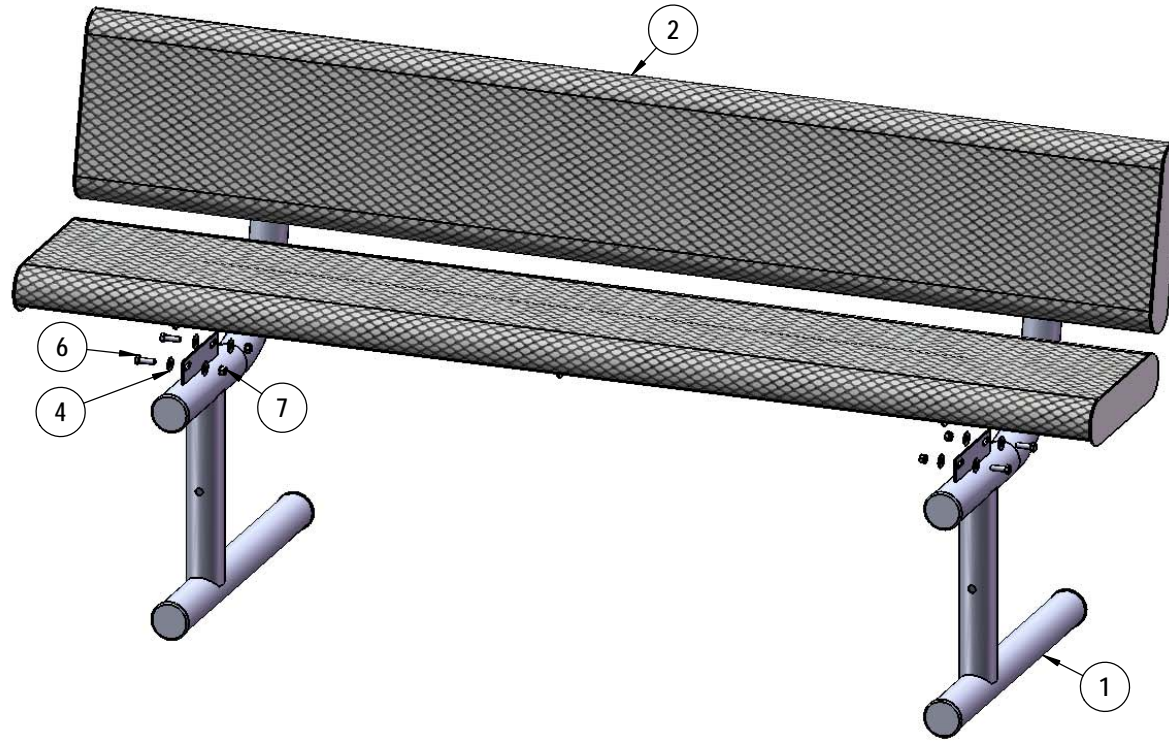
**Dimensions:** 6' bench portable with back. Seats and back are 12" wide x 72" long. Seat height is 19-1/2", seat back height is 35-1/4". Total depth of seat with back is 22-1/4".

# COMPONENTS



ITEM NO.	PartNo	DESCRIPTION	QTY
1	P-V940P	940P Vinyl Leg	2
2	T-VR72-S	6' Vinyl Rolled Seat	2
3	P-01-04-0129	26 3/4" Brace	2
4	33-02-0007	5/16" SS Washer	20
5	33-02-0008	3/8" Flat Washer (SS)	2
6	33-05-0029	5/16" x 1" Machine Bolt (SS)	10
7	33-03-0012	5/16" Kee Nut (SS)	10
8	33-03-0013	3/8" Kee Nut (SS)	2
9	33-06-0058	3/8" x 3" Carriage Bolt (SS)	2

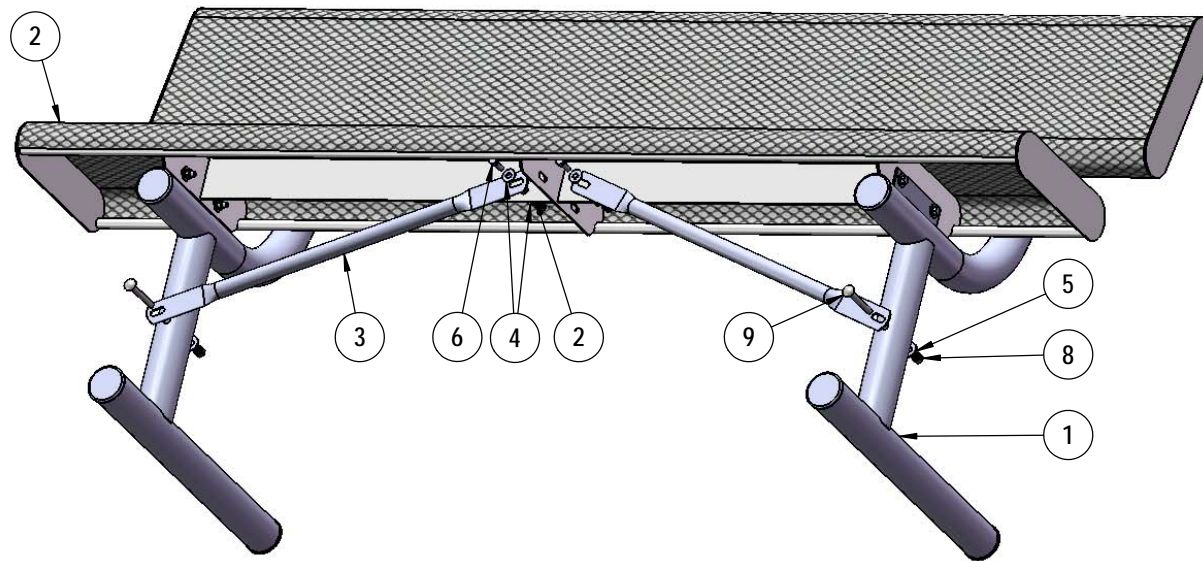
## STEP 1



Attach the Punched Seat to the legs using specified hardware.



## STEP 2



Attach the 26 3/4" Braces to the Seat and legs as shown using specified hardware.

## OVERALL DIMENSIONS

