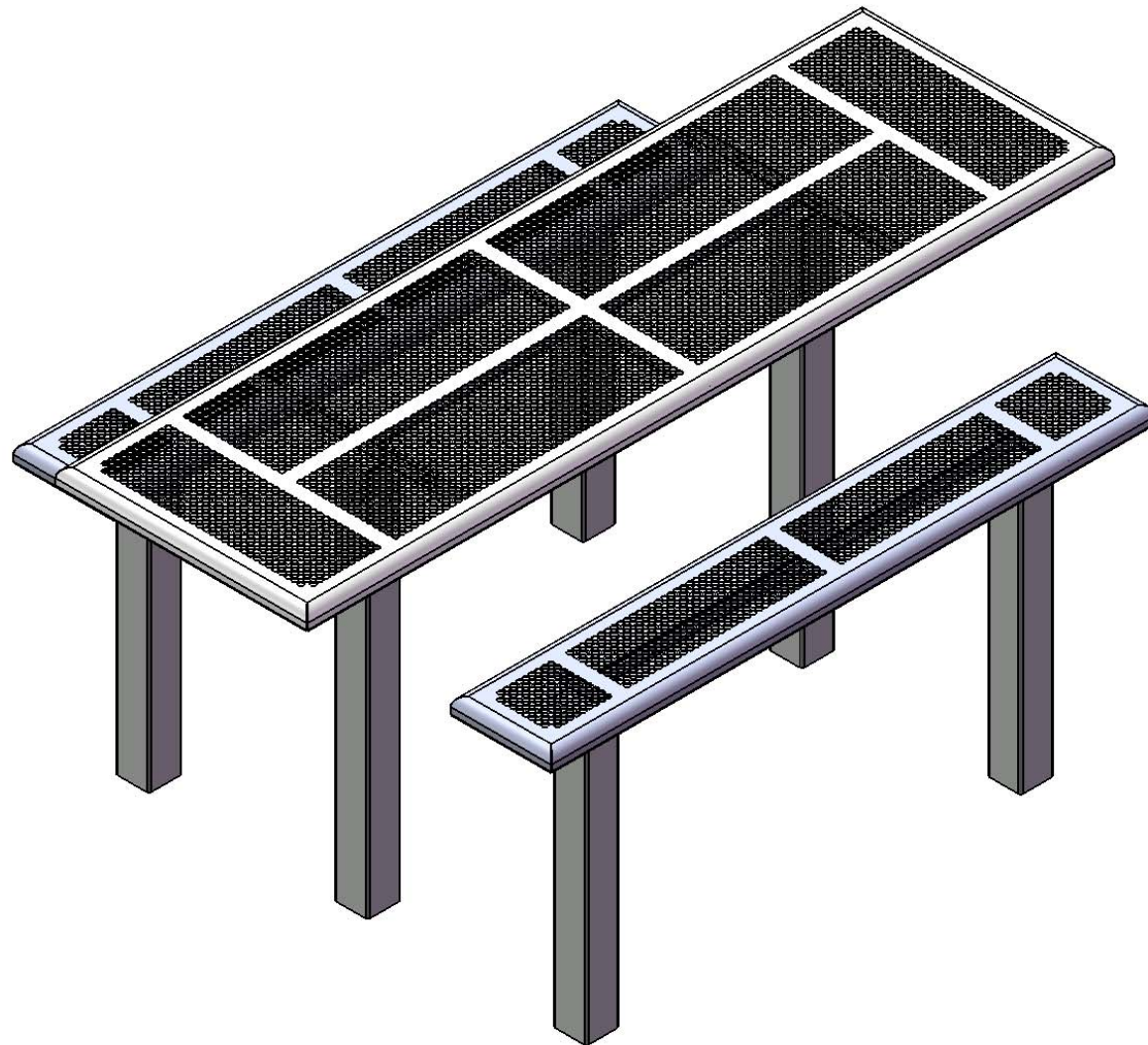


# *Site Amenities*

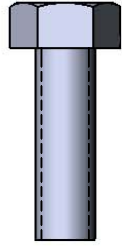
BY SUPERIOR RECREATIONAL PRODUCTS



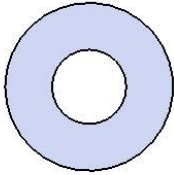
Model #  
T8PERFHDCP4-4S

 **SUPERIOR**<sup>®</sup>  
RECREATIONAL PRODUCTS  
A PLAYCORE Company

## HARDWARE



5/16" X 1"  
Machine Bolt



5/16" Washer



5/16" Kep Nut

# PRODUCT SPECIFICATIONS

## **T8PERFHDCP4-4S** **8' ACCESSIBLE INGROUND PICNIC TABLE WALK-THROUGH DESIGN**

**Top & Seats:** Top and seats shall have a 1-1/2" radius edge, fabricated from a 14 ga. steel plate. Holes are precision punched at 5/8" diameter. 7 gauge x 1-1/2" flat bar center support and mounting bracket understructure. Electrically MIG welded.

**Coating:** Oven fused functionalized polyethylene copolymer-based thermoplastic. Fluidized bed coating application with superior mechanical performance, impact resistance and UV-stability.

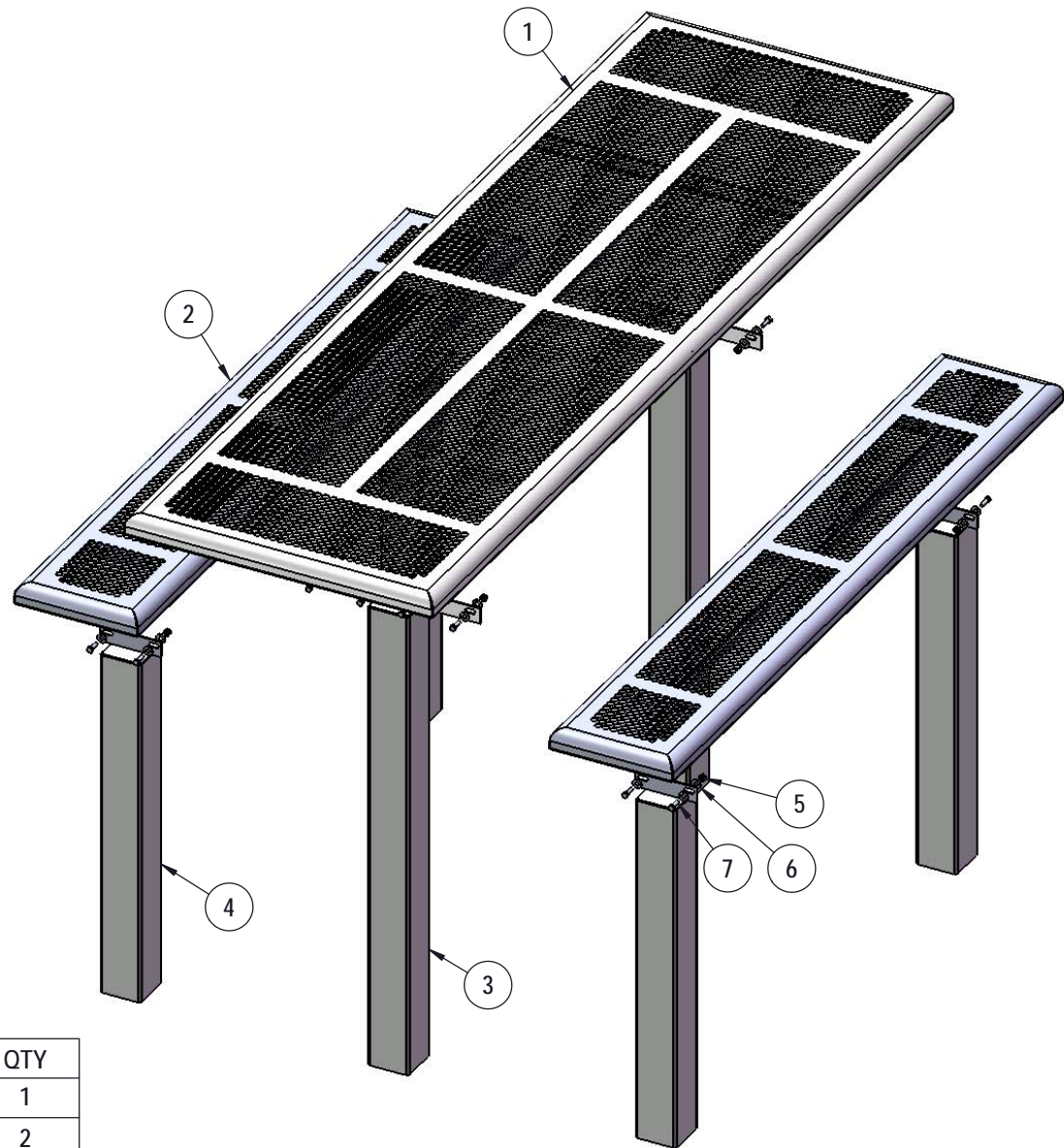
**Frame:** 4 x 4 x 11 gauge structural steel square tubing. Legs are capped with a 4 x 4 x 3/16" steel flat bar. Seat and top mounting points 7 gauge x 1-1/2" die stamped steel flat bar. All electrically MIG welded.

**Frame Coating:** Electrostatic powder coated application oven cured.

**Hardware:** All stainless steel hardware fasteners.

**Dimensions:** 8' permanent picnic table walk-through design. Top is 30-1/8" wide x 96-1/8" long and is 30" high. Seats are 12-1/8" wide x 72-1/8" long and 18" high. Outside to outside dimension is 64" x 96-1/8".

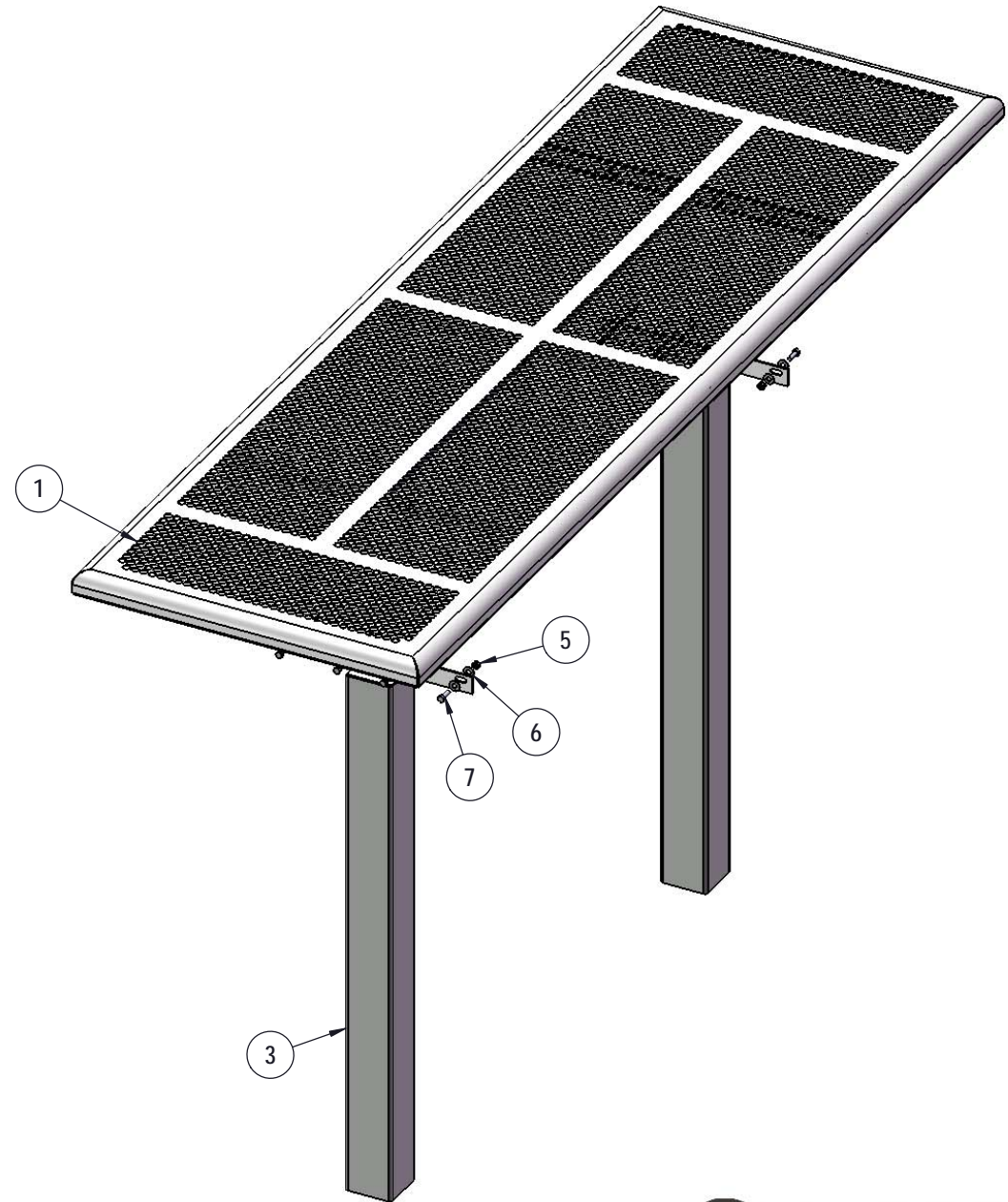
# COMPONENTS



ITEM NO.	PartNo	DESCRIPTION	QTY
1	T-PR96H-T	8' Handicap Punched Rolled Top	1
2	T-PR72-S	6' Punched Rolled Seat	2
3	P-V349S-T	Vinyl S top leg	2
4	P-V349S-S	Vinyl S Seat leg	4
5	33-03-0012	5/16" Kep Nut (SS)	16
6	33-02-0007	5/16" SS Washer	32
7	33-05-0029	5/16" x 1" Machine Bolt (SS)	16

## STEP 1

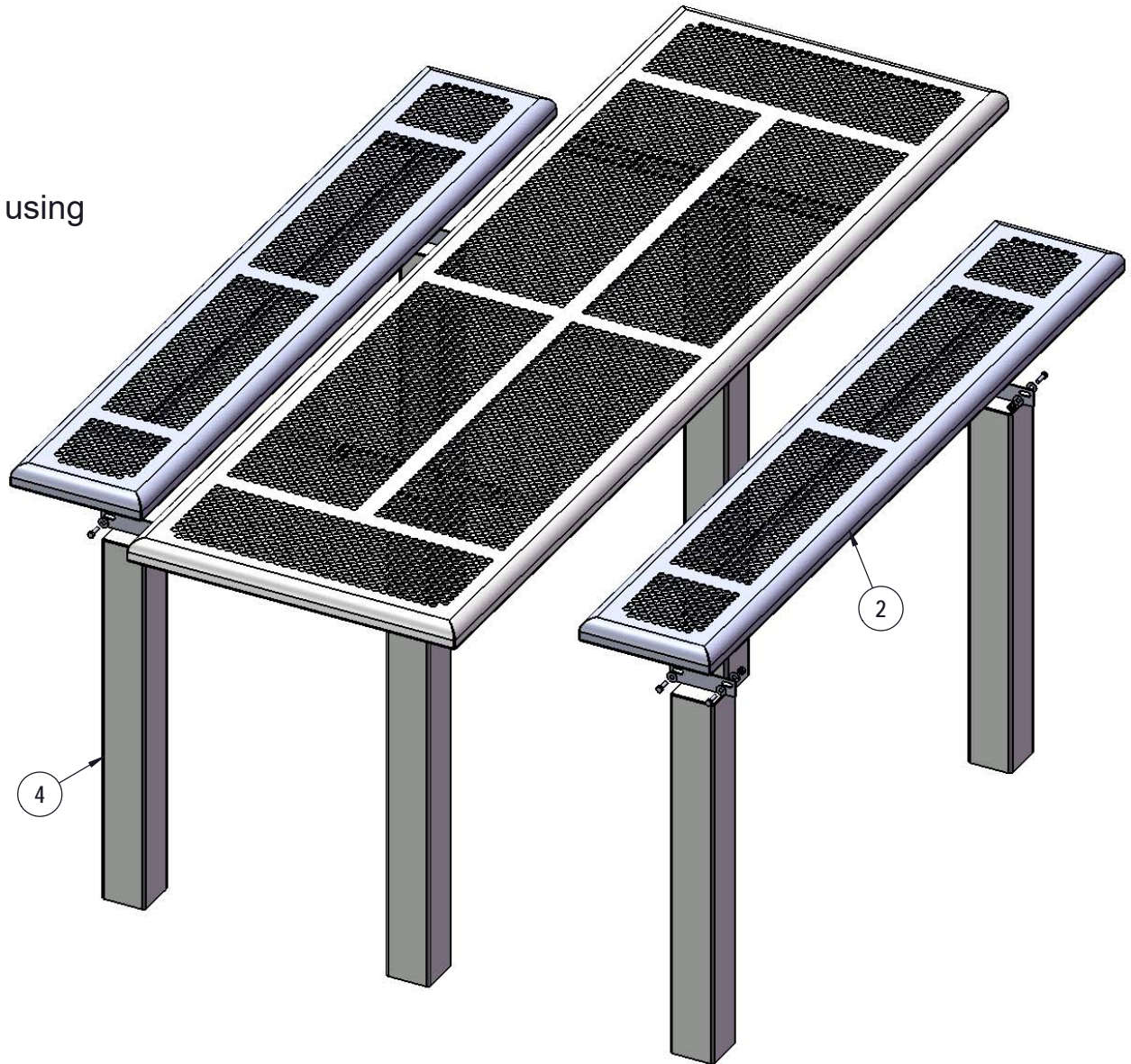
Attach the 8' Top to the Top Legs using specified hardware.



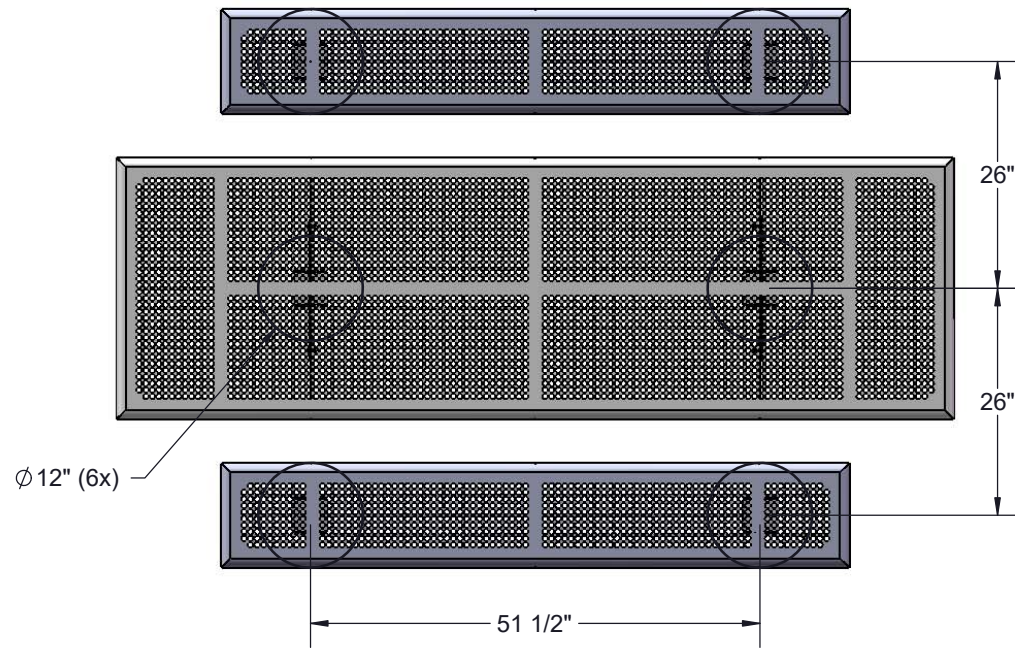


## STEP 2

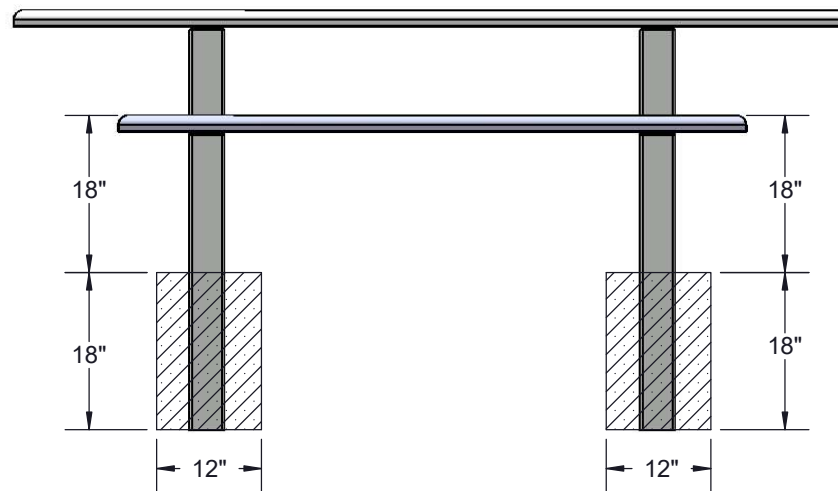
Attach the 6' Seats to the Seat Legs using specified hardware.



# FOOTINGS



Estimated Required Concrete:  
19 - 50 lb Bags of Concrete Mix



## OVERALL DIMENSIONS

